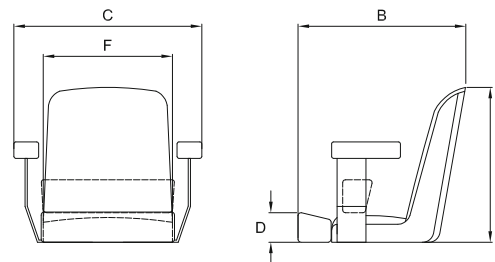




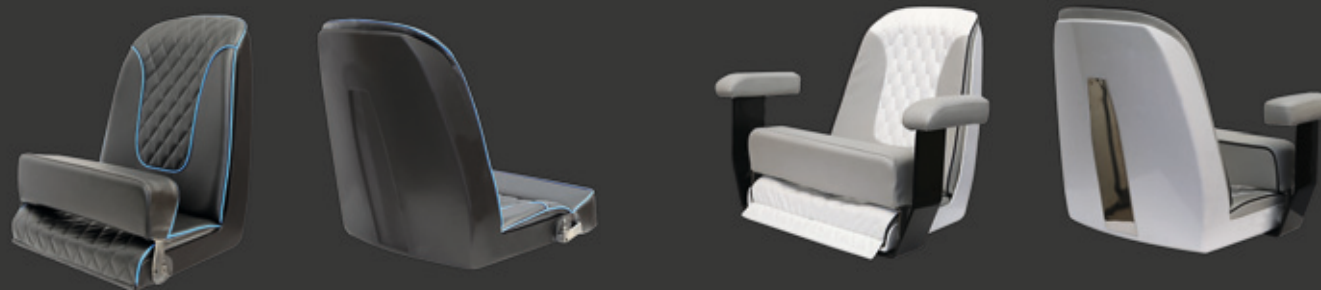
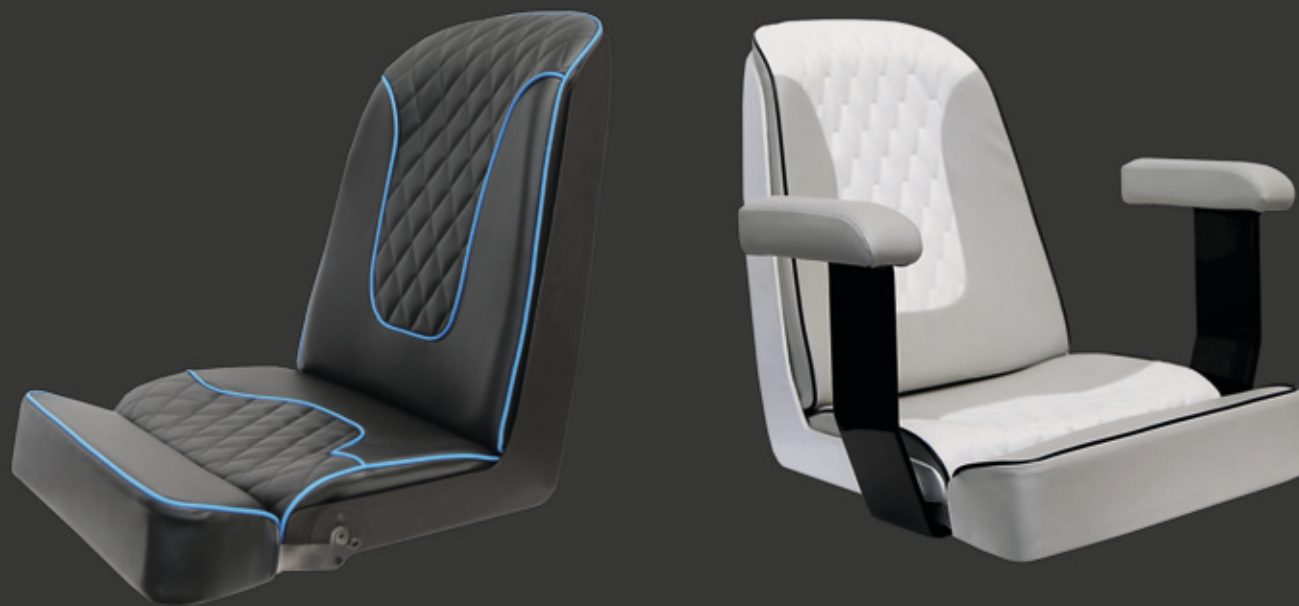
Besenzoni helm seats are expressly made for the steering compartment, both interior or exterior, with a large range of movement solutions and regulations which assure the most comfortable and efficient steering position.



A mm	565
B mm	~615
C mm	~685
D mm	110
F mm	470

Helm seat P 258 Pearl

- Helm seat with fixed backrest and flip up bolster for stand-up steering position
- Surrounding anatomical ergonomic seat
- Standard vinyl fabric upholstery or genuine leather
- As alternative, we can cover the seat using the client's fabric
- Fiberglass powder coated shell
- Option available: with armrest
- Option available: with polished stainless steel shell insert



DISCOVER MORE HELM SEATS AT:



INFO@BESENZONI.IT
WWW.BESENZONI.IT